

Cat 5E 350MHz UTP Plenum Cable

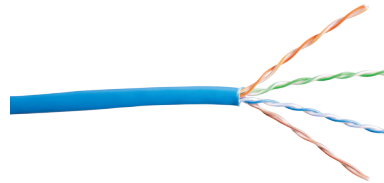
Part Number: BC-C5EPL-XX

XX=Available in white, blue, yellow



Specification

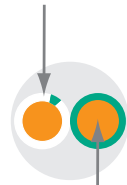
Transmission Standards ANSI/TIA-568-C.2
CENELEC EN 50288-3-1 | ISO/IEC 11801 Class D
(cUL)us Listed Type CMP, CSA Type FT6
RoHS Compliant
Tested from 1 to 400 MHz
UL Verified Category 5e



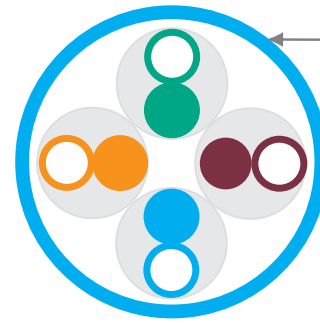
Applications

1000 BASE-T Gigabit Ethernet
1000 Mbps ATM
622 Mbps ATM
100 BASE-T Ethernet
10 BASE-T
Broadband Video
POE

Primary
Insulation



24 AWG
Bare Copper



Overall Jacket

Electrical Characteristics

Input Impedance: $100 \pm 15\Omega$ (0.772 to 100 MHz)
Maximum Resistance Unbalance: 5%
Maximum Capacitance Unbalance: 330 pF/100 Meters
Maximum Delay Skew: 45 ns/100 Meters
Nominal Velocity of Propagation (NVP): 70%, Plenum

Transmission Specifications

Freq. (MHz)	Ins. Loss		NEXT		PSNEXT		ACR		PSACR		ACRF		PSACRF		Return Loss	
	Std.	Max.	Std.	Min.	Std.	Min.	Cal.	Min.	Cal.	Min.	Std.	Min.	Std.	Min.	Std.	Min.
1	2.0	2.0	65.3	71.3	62.3	68.3	62.9	69.3	59.9	66.3	63.8	69.8	60.8	66.8	20.0	20.0
4	4.1	4.1	56.3	62.3	53.3	59.3	51.4	58.2	48.4	55.2	51.8	57.8	48.8	54.8	23.0	23.0
8	5.8	5.8	51.8	57.8	48.8	54.8	44.9	52.0	41.9	49.0	45.7	51.7	42.7	48.7	24.5	24.5
10	6.5	6.5	50.3	56.3	47.03	53.3	42.5	49.8	39.5	46.8	43.8	49.8	40.8	46.8	25.0	25.0
16	8.2	8.2	47.2	53.2	44.2	50.2	37.3	45.0	34.3	42.0	39.7	45.7	36.7	42.7	25.0	25.0
31.25	11.7	11.7	45.8	48.9	39.9	45.9	28.8	37.2	25.8	34.2	33.9	39.9	30.9	36.9	23.6	23.6
62.5	17.0	17.0	44.3	44.4	35.4	41.4	18.0	27.4	15.0	24.4	27.9	33.9	24.9	30.9	21.5	21.5
100	22.0	22.0	35.3	41.3	32.3	38.3	8.9	19.3	5.9	16.3	23.8	29.8	20.8	26.8	20.1	20.1
155	-	28.1	-	38.5	-	35.5	-	10.4	-	7.4	-	25.9	-	22.9	-	18.8
200	-	32.4	-	36.8	-	33.8	-	4.4	-	1.4	-	23.7	-	20.7	-	18.0
250	-	36.9	-	35.3	-	32.3	-	-	-	-	-	21.8	-	18.8	-	17.3
350	-	44.9	-	33.1	-	30.1	-	-	-	-	-	18.9	-	15.9	-	16.3
400	-	48.5	-	32.3	-	29.3	-	-	-	-	-	17.8	-	14.8	-	15.9